

How can I download and install NetExtender for Windows?

Description

NetExtender is available for free and can be downloaded from both SonicWall.com and from the Virtual Office on the SonicWall firewall.

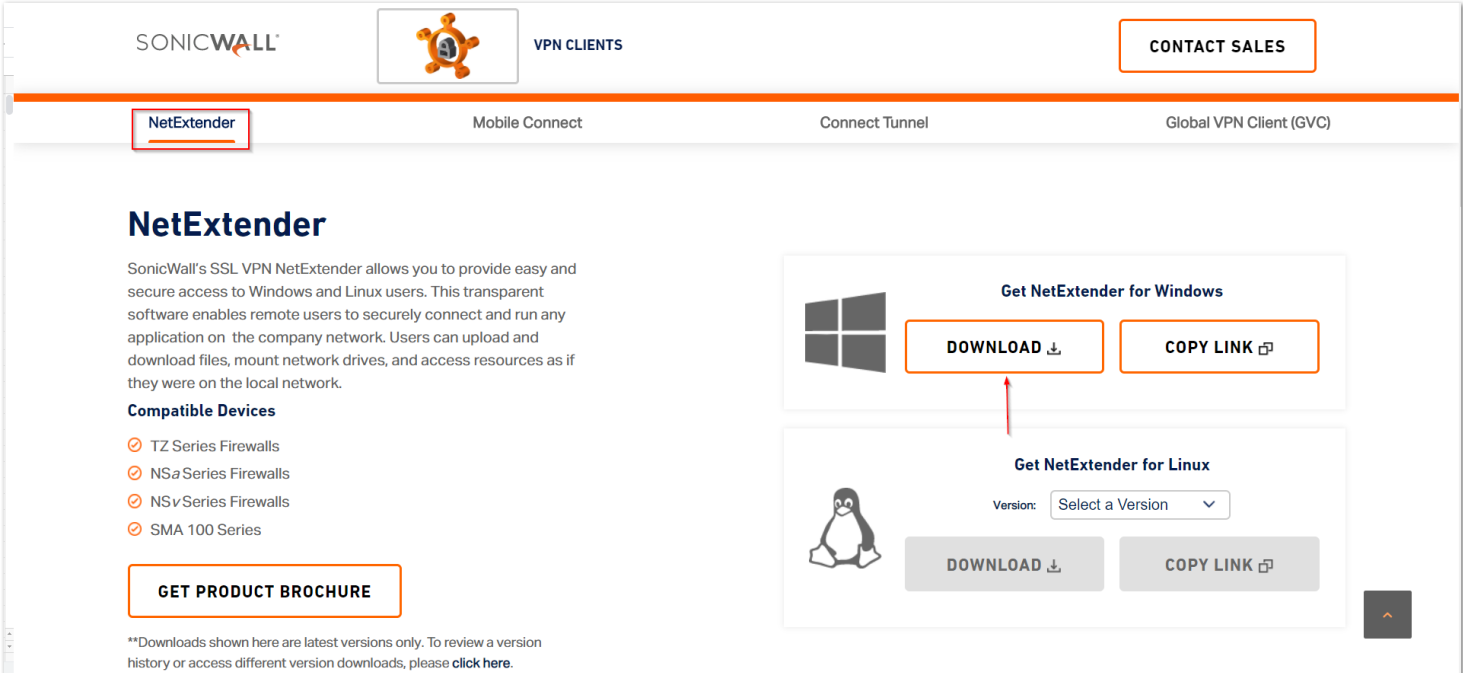
Don't want to read? Watch instead!

Resolution

Download NetExtender via SonicWall.com

1. Navigate to the SonicWall VPN Clients page at

<https://www.sonicwall.com/products/remote-access/vpn-clients/2..>



The screenshot shows the SonicWall VPN Clients page. The navigation bar includes the SonicWall logo, a VPN Clients icon, and a CONTACT SALES button. Below the navigation bar, there are tabs for NetExtender (highlighted with a red box), Mobile Connect, Connect Tunnel, and Global VPN Client (GVC). The main content area features a section for NetExtender with a description and a list of compatible devices: TZ Series Firewalls, NSa Series Firewalls, NSv Series Firewalls, and SMA 100 Series. A GET PRODUCT BROCHURE button is located below the list. To the right, there are two download sections: 'Get NetExtender for Windows' and 'Get NetExtender for Linux'. The Windows section has a 'DOWNLOAD' button (highlighted with a red box and an arrow) and a 'COPY LINK' button. The Linux section has a 'Version:' dropdown menu and 'DOWNLOAD' and 'COPY LINK' buttons. A small disclaimer at the bottom states: '**Downloads shown here are latest versions only. To review a version history or access different version downloads, please [click here](#).

3. Select **NetExtender** 4. and under Get NetExtender for Windows, click **DOWNLOAD**.

5. This will download the latest version of NetExtender.

Another option is to download NetExtender via the Virtual Office page:

In order to download NetExtender from the Virtual Office, the SonicWall SSL VPN feature must be enabled.

1. Navigate to any public or private IP address which the SonicWall will accept user logins from and append the port number used for the SSL VPN feature.



EXAMPLE: If your SonicWall is reachable via **1.1.1.1** from the WAN, and your SSL VPN is setup to use Port 4433, you would navigate to **https://1.1.1.1:4433**.



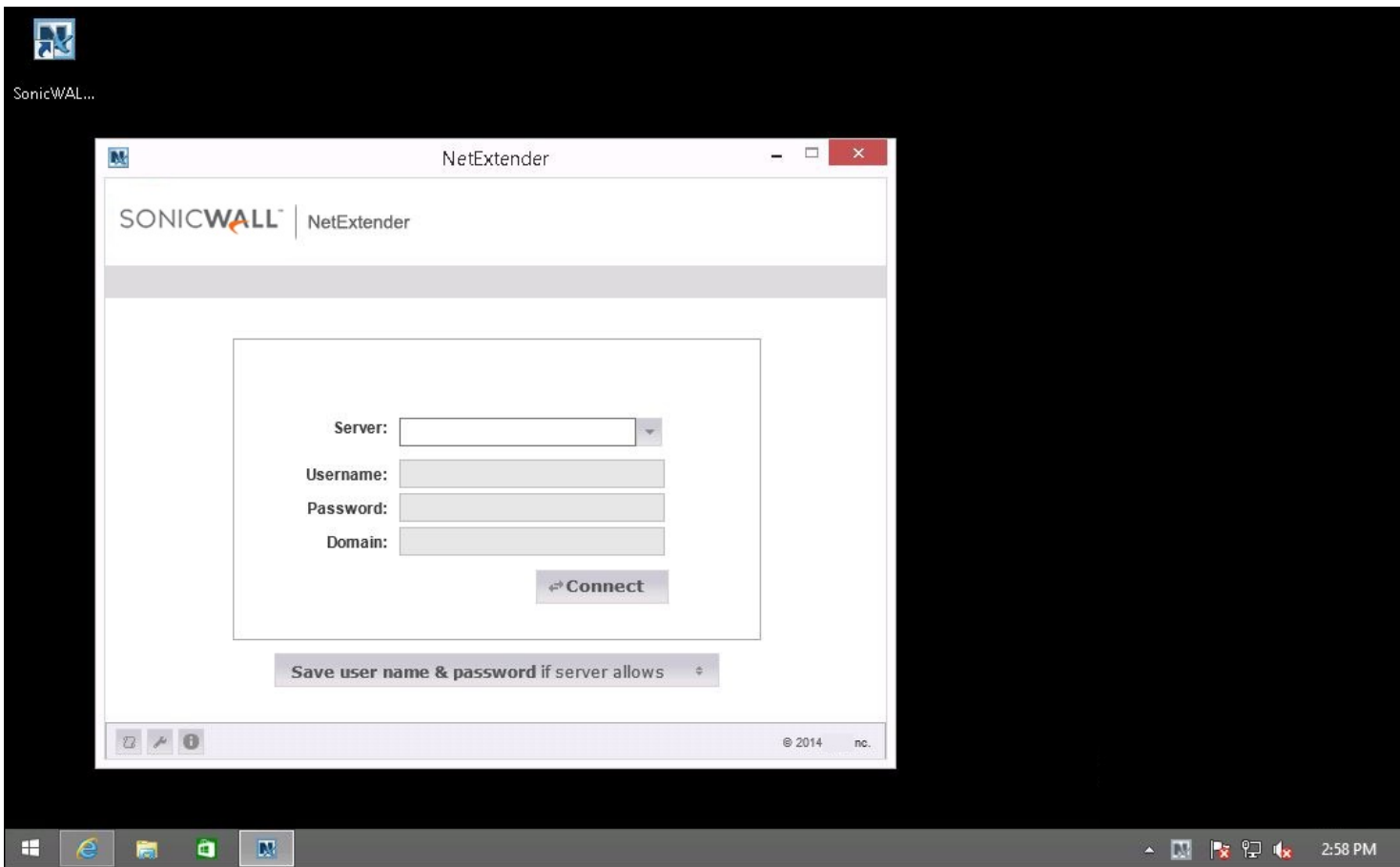
TIP: If you're unsure whether or not an IP Address will accept User Logins, navigate to Network | Interfaces and select Configure for the Interface in question. User Login is a checkbox on the resulting pop-up window.

2. Login with a Local or LDAP User who belongs to the SSLVPN Services Group. Select **Click here to download Windows NetExtender Client**. Once downloaded, move onto the **Installing NetExtender** step below

After download NetExtender from either MySonicWall or the Virtual Office page, it's time to install



1. Once the NetExtender package has been downloaded start the setup process by double-clicking the file.



2. Once the installation has completed double-click the application to launch.
3. The server name, username, and password should be provided to you via your IT administrator.

Further reading:

How do I download and install NetExtender for Linux?

- How do I download free SonicWall software?.